



Residence Hall Living Space

NOTE: All bunk beds can be made into single beds, all halls are air-conditioned and are furnished with desk chairs, trash cans and window covering. All **student rooms** have high speed internet and extended cable.



VANDERBURGH HALL

All-Female/2 Double Rooms joined by Bathroom

4 Floors

Overall 26' Length 22' Width

Bedroom 14' Length 9'4" Width

✓ Furniture movable. ✓ Beds can be bunked/lofted.

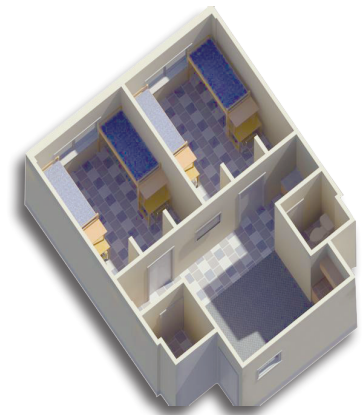
CLARK HALL

Co-Ed Housing – 2 Bedroom – 2 Bath – 4 person Suites

1st – 2nd – 3rd Floors

Bedroom 16'3" Length 11'7" Width

✓ Furniture movable. ✓ Beds can be bunked/lofted.



GODARE HALL

Co-Ed or Single Sex Housing/Community Showers

1st – 2nd – 3rd Floors

Double rooms

Bedroom 18' Length 11'9" Width

✓ Furniture movable. ✓ Beds can be bunked/lofted.

* Private rooms available in specific halls to be determined. Additional fee required.

** \$400.00 private prepayment required. Assignment based on availability.

*** Room and Board rates are subject to Board of Trustees Approval.

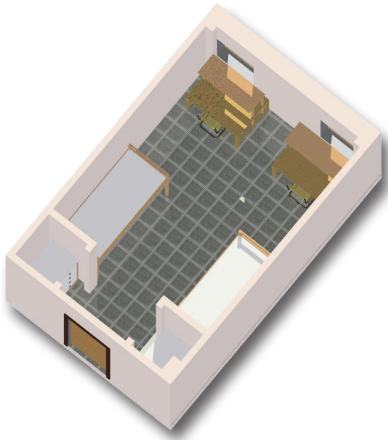
**** Subject to Change according to occupancy/renovation Schedule





Residence Hall Living Space

NOTE: All bunk beds can be made into single beds, all halls are air-conditioned and are furnished with desk chairs, trash cans and window covering. All **student rooms** have high speed internet and extended cable.



VIGO HALL

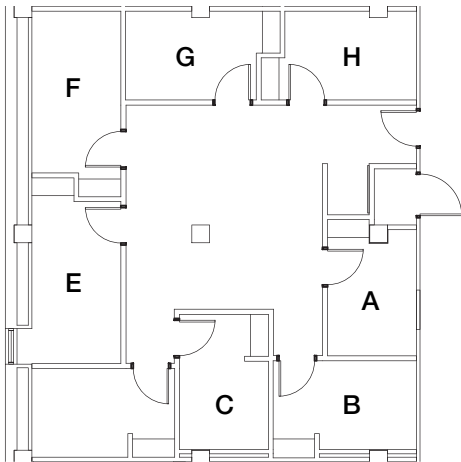
Co-Ed or Single Sex Housing/Community Showers

1st – 2nd – 3rd Floors

Double rooms

18' Length 12' Width

✓ Furniture movable. ✓ Beds can be bunked/lofted.



EBNER HALL

Co-Ed or Single Sex Housing/Community Showers

3rd – 4th – 5th Floors

Suite style with 6-8 rooms adjoining small living room

Single rooms

Technology-Male / STEM-Female majors only

Room dimensions vary

✓ Furniture movable. ✓ Beds can be lofted.

* Private rooms available in specific halls to be determined. Additional fee required.

** \$400.00 private prepayment required. Assignment based on availability.

*** Room and Board rates are subject to Board of Trustees Approval.

**** Subject to Change according to occupancy/renovation Schedule

